

PHILADELPHIA  
FOUNDATION

P THE  
SECOND  
CENTURY  
OF  
IMPACT

SPECIAL EDITION  
THREE-YEAR REPORT  
**2020-2022**

KEY TO OUR  
**FUTURE**



# TABLE OF CONTENTS

A LETTER FROM PEDRO .....	1
PHL COVID 19 FUND .....	3
KEY MILESTONES .....	7
CONNECT .....	11
ACTIVATE .....	17
ACCELERATE IMPACT .....	19
OUR CAUSE AREAS .....	23
BY THE NUMBERS & THANK YOU .....	25



# A LETTER FROM PEDRO

---

To all of our donors, partners, friends, and extended community,

Over the past several years, the Greater Philadelphia region faced new, unique challenges that forced citizens to adapt. The COVID-19 pandemic, civil unrest, extreme weather, and more sparked modern movements and reignited long simmering tensions. New agents of change emerged, and public support reached levels we haven't witnessed in decades.

The generosity of our donors and the efforts of our nonprofit partners served as the connectors, activators, and accelerators that breathed new life into our region during this time, and we couldn't be prouder of their collective effort.

Your financial support, service, and collaboration, coupled with the wise forethought of our predecessors and the strategic guidance of our board, ensured that the Philadelphia Foundation was ready to provide critical support and leadership when it was needed most.

We've been truly inspired by how our region has responded during such a transformative period and are energized by what is to come.

To recognize this era, we're releasing a special three-year report to capture the region's essence and reinvigorated spirit.

This special report is a glimpse into our world at the Philadelphia Foundation. It allows us to bring to life the highlights of the past three years while sharing our vision for the future and the steps we are taking to get there.

As always, this report is dedicated to our donors and partners for their relentless pursuit of progress. And now, let's celebrate their achievements!

Thank you all for being Key to Our Community.

Pedro A. Ramos, President and CEO





# PHL COVID 19 FUND 2020–2021

## ANSWERING THE CALL OF A COMMUNITY IN CRISIS

As the COVID-19 pandemic hit the U.S. in early 2020, our region, alongside the rest of the country and globe, were gripped with uncertainty. Across sectors, leaders and essential workers stepped up in unprecedented ways to ensure residents had access to critical needs like healthcare, food and other services.

At the same time, Americans faced impossible circumstances. Schools, childcare facilities and workplaces shut down. And we were all isolated from loved ones to help curb the spread of COVID-19. It was a challenge unlike any our nation had seen in the past century. Local communities in the Greater Philadelphia region were not spared from the devastating impact – socially, emotionally, physically or economically.

Our donors sprung to action by supporting The PHL COVID-19 Fund, which led the way in helping nonprofits weather the early days of the pandemic. Thanks to the support of more than 8,500 foundation, corporate and individual donors, The PHL COVID-19 Fund raised and deployed \$18.47 million in grants to nearly 600 nonprofits. In the first 100 days of the Fund's operations, \$17.5 million was rapidly deployed. These timely grants helped ensure organizations could operate safely, families could put food on their tables,

our most vulnerable community members had shelter and communities could eventually reopen safely.

Philadelphia Foundation was uniquely positioned to lead this effort in partnership with United Way of Greater Philadelphia and Southern New Jersey and the City of Philadelphia.

We housed the effort at the Philadelphia Foundation and drew upon our long-standing and trusted relationships with diverse community-based organizations as well as the United Way's deep geographic reach. Together with our partners and donors, we were able to raise and quickly direct funding to the organization's helping those who needed it most.

## AREAS OF IMPACT

With nonprofits facing resource shortages while demand for their services increased, the PHL COVID-19 Fund focused its impact on the following areas:

**01** Expanding the delivery of life-sustaining services to meet COVID-induced growth in demand among the most vulnerable populations across the region.

**02** Preventing the disruption of services by providing nonprofits with critical supplies and resources like personal protective equipment and technological capacity.

**03** Sustaining nonprofits facing devastating revenue losses due to closures and interruptions brought on by COVID-19.



**"** We have never known a time more important than now to come together to marshal the muscle and means that reside throughout our region in response to the national emergency that is ferociously challenging all of us. Supporting the nonprofit organizations serving on the frontlines of our communities is vital to immediately aiding our most vulnerable neighbors who are at risk and have the greatest needs."

Pedro Ramos,  
President and CEO of Philadelphia Foundation

**"** Long before the COVID-19 pandemic, Philadelphians – particularly those in communities of color – have struggled due to the systemic inequities of deep poverty, racism and socio-economic disparities in health and healthcare. At a time of great need, and greater uncertainty, the PHL COVID-19 Fund stepped up to ensure that frontline-serving organizations had the resources they needed to continue to serve our city's most vulnerable communities.

As we all continue to realize the economic impact and health implications of this pandemic, we must continue to make those in greatest need our number one priority."

Sharmain Matlock-Turner, CEO, UAC Member and PHL COVID-19 Fund Civic Leadership Council

## MOUNTING A TARGETED RESPONSE

By adopting an efficient, streamlined application and review process, the Fund was able to rapidly provide grants to Greater Philadelphia area nonprofit organizations with a successful track record of serving vulnerable and at-risk populations.

Grants were targeted to nonprofits providing community safety nets, such as food pantries and health services, as well as preparedness and protection services, such as hygiene supplies and access to accurate information. Grant dollars facilitated the delivery of food and basic supplies, housing, healthcare, family services, education, job training, housing expenses and much more.

At the same time, the Fund saw the importance of using an equity lens to reach smaller, grassroots and BIPOC-led organizations that are often overlooked by traditional funding sources. Many such organizations – often trusted, turn-to resources in their local communities – were stepping up to respond to the growing needs of their neighbors. The PHL COVID-19 Fund recognized the need to support these critical efforts and was intentional in developing guidelines that would also embrace newer and fiscally sponsored organizations serving on the frontlines of COVID-19 response.



# PHL COVID-19 FUND IN ACTION

**\$18.47  
MILLION**  
*raised & distributed*

**\$61  
MILLION**  
*in grant requests reviewed*

**\$30,000**  
*average grant size*

**600**  
*grants awarded*

**1,644**  
*grant applications  
reviewed*

PHL COVID-19 Fund grants supported a wide range of uses, with most grants supporting multiple areas for any given recipient organization. During Phase I, in the early days of the pandemic, top uses included food and supplies, frontline staff, and logistics technical support to enable services. Funding uses transitioned during Phase II to focus on supports for reopening, as reflected in a shift toward COVID-19 supplies, recreational and educational supplies, and support for frontline staff.

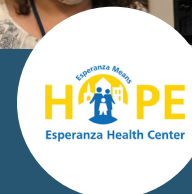
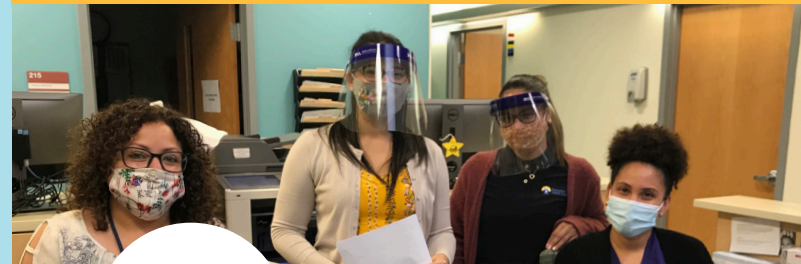


HOPEWORKS  
CAMDEN COUNTY, NJ

## INVESTING IN TECHNOLOGY TO VIRTUALLY SERVE YOUTH

The lessons Hopeworks learned working remotely enabled the organization to use the power of remote/in-person hybrid learning to reach and place more youth in more locations than ever before, scaling the organization's work at a dramatically lower cost per youth.

### GRANT RECIPIENT SPOTLIGHTS



ESPERANZA HEALTH CENTER  
NORTH PHILA., PA

## EVOLVING SERVICE TO DELIVERY MODELS TO MEET CLIENT NEEDS

The ability for our entire staff to have remote access to our electronic medical records system and to conduct telehealth patient visits made it possible for us to address urgent family needs in times of distress in real-time.

The Middleton Family Presents

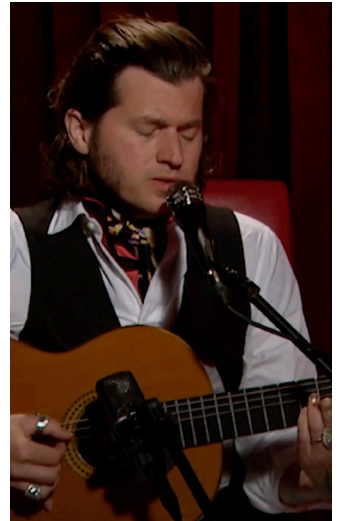
**PHLove**

A variety show benefiting  
the PHL COVID-19 Fund



**DARYL HALL • QUEST LOVE • PATTI LABELLE**

DJ JAZZY JEFF • AMOS LEE • DJ DIAMOND KUTS & FRIENDS  
WALLO267 • JEFFREY GAINES • JAY BUCHANAN OF RIVAL SONS  
THE GEATOR JERRY BLAVAT AND FRIENDS  
PASTOR ALYN WALLER & THE ENON TABERNACLE FRESH ANOINTING



# PRIDE AND GRATITUDE

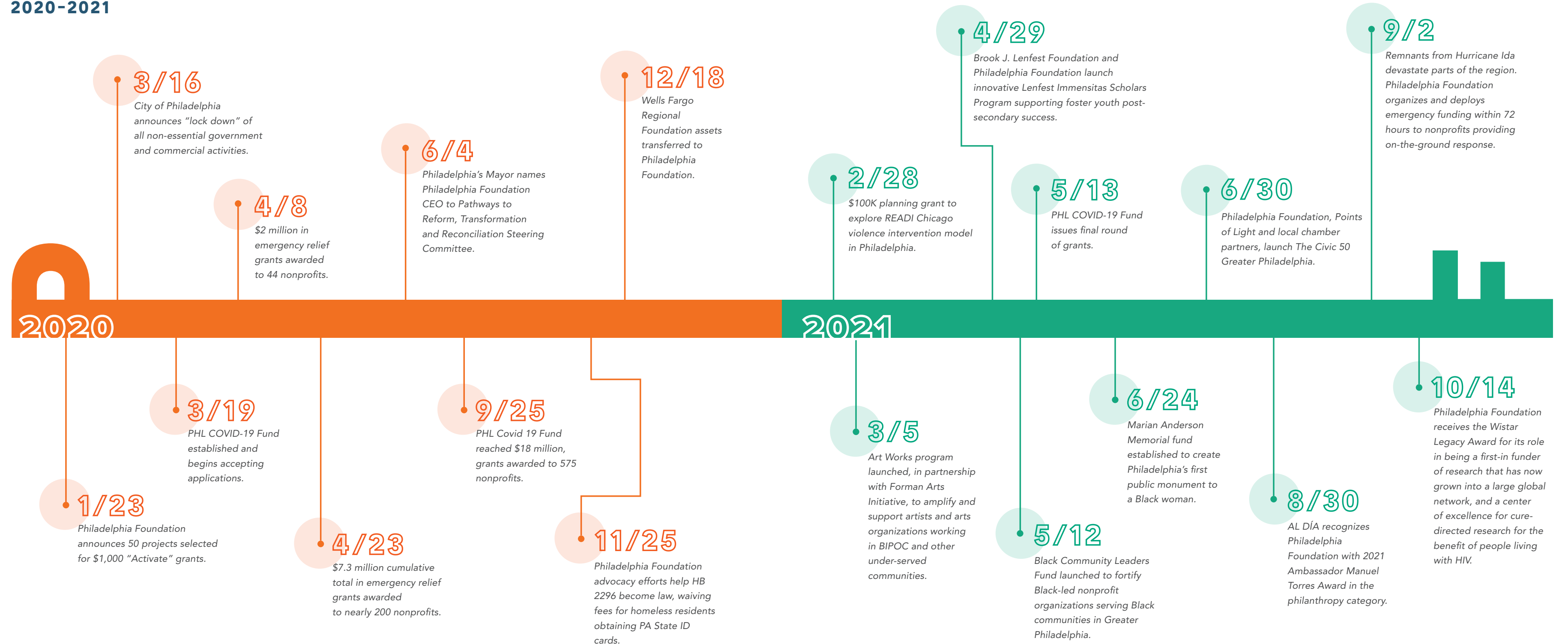
The success of the PHL COVID-19 Fund was a culmination of countless efforts from thousands of individuals. We are proud of the work the Fund accomplished, grateful for the generosity of all those who contributed to it, and especially humbled by the bravery and dedication of the medical community and nonprofits whose work it made possible. Much work remains, of course, but together, we can – and must – continue to collaborate on the full recovery of our region.

**40%** of grantees had budgets of  
\$1 million or less, with more than  
a quarter having budgets under \$500,000.



# KEY MILESTONES

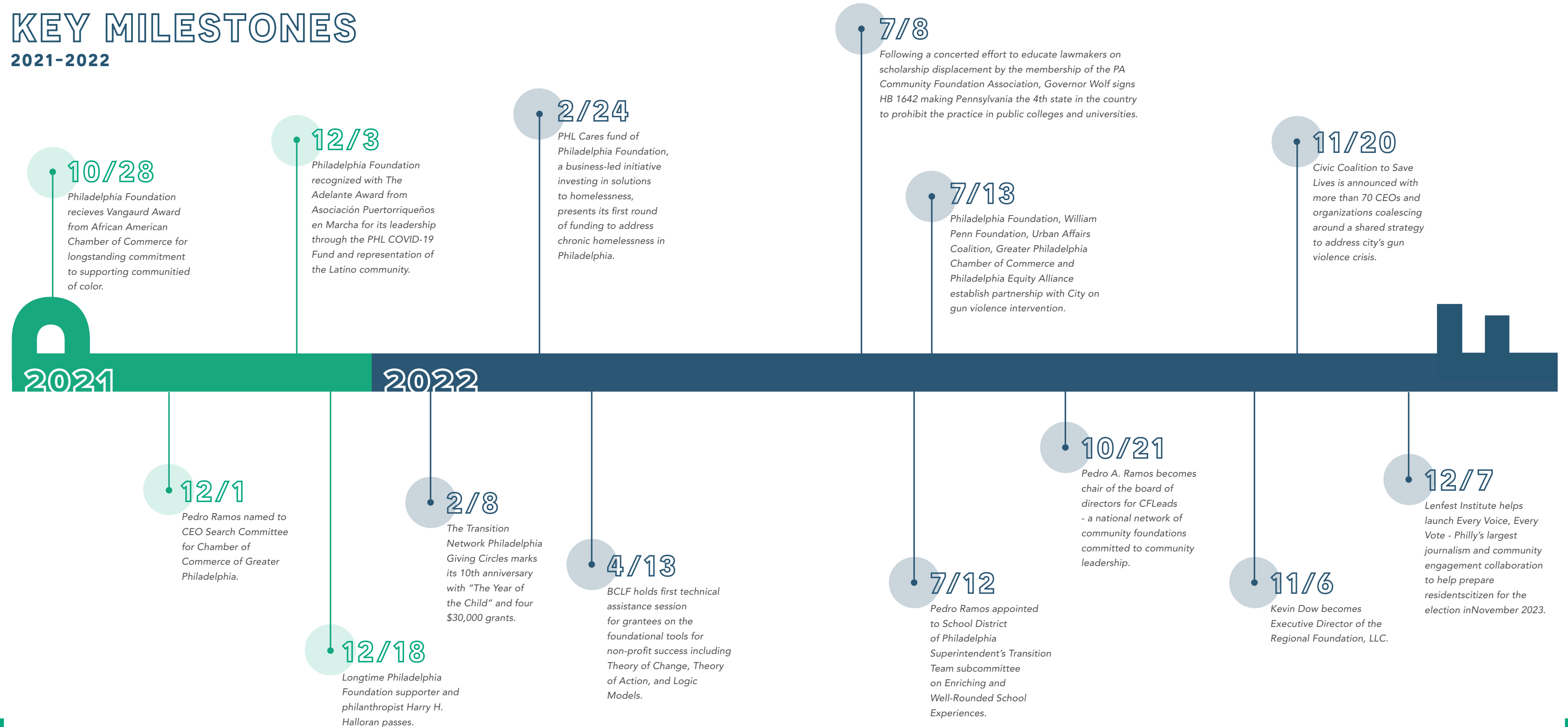
2020-2021





# KEY MILESTONES

2021-2022







# CONNECT

A

## CIVIC COALITION TO SAVE LIVES (2022-2023)

Between 2013 and 2021, Philadelphia experienced a 128% increase in homicides annually, with 2021 being the deadliest year in the city's history.

To better understand the issue of gun violence, Philadelphia Foundation and The William Penn Foundation engaged the National Institute for Criminal Justice Reform (NICJR) to analyze the data locally and to connect us to cities that were successfully reducing incidence of gun violence year-over-year. This analysis helped us to better understand Philadelphia-specific data and how it differed from common beliefs and narratives. It also underscored that government plays a crucial role but cannot solve gun violence alone; this is a public crisis that demands coordinated civic action. We cannot wait and hope things get better. We must effect change, and we must act together.

The NICJR analysis was insightful in a myriad of ways. One poignant example is an insight about the prevalence of young people engaged in gun violence. While the number of youths under 18 engaged in gun violence increased in recent years, it had done so proportionately with the rising tide of violence, hovering between 9-10% of the total. This contrasted the prevailing narrative that out-of-control teens were driving gun violence in the city. As we learned, there are more people 45 years old and older engaged in gun violence than those under 18. In fact, the average age of a victim in 2021 was 29.8 years old.

This analysis also underscored the disproportionate manner in which gun violence impacts Philadelphia's Black community as more than 80% of homicide victims were Black, while Black citizens comprise only 43.6% of the city's population.

Our learning journey continued through a series of conversations locally and across the country with city officials and members of law enforcement, district attorneys' offices, courts, probation, parole, and the mental, behavioral, and public health systems. We learned from on-the-ground practitioners and faith-based leaders, from victims and perpetrators. Academics helped us understand the nuances of which types of programs worked and under what conditions and where and how cities struggled to get their arms around the issue.

These conversations left us hopeful that there are things that can be done to reduce gun violence in the near term. Three themes emerged from this work. Cities that have achieved success reducing gun violence have:

- 01** Shared ownership of the problem and an understanding of the role they play in the overall strategy. The government isn't handling it alone. The corporate, civic, and philanthropic sectors are engaged in meaningful ways.
- 02** Strategic clarity, rooted in data, on the specific problem and clear alignment between the risk factors placing someone at very high risk of killing or being killed and the necessary interventions.
- 03** A single point of authority, with a sole focus on the small population of very high-risk individuals and the necessary authority to coordinate activities across government, the private and nonprofit sectors.



The Philadelphia Inquirer

A NEW HOPE IN THE FIGHT TO REDUCE GUN VIOLENCE



The Philadelphia Tribune

NEW COALITION TO TACKLE PHILADELPHIA'S GUN VIOLENCE

Philadelphia, by comparison, had aspects of these pillars but suffered from many of the challenges facing other cities.

To help address this crisis, Philadelphia Foundation and the William Penn Foundation, in partnership with Urban Affairs Coalition, The Chamber of Commerce for Greater Philadelphia, and the Philadelphia Equity Alliance, stepped forward to help catalyze a broad civic effort to stem gun violence – committing to the Mayor and each other our intent to share ownership of this problem and the hard work necessary to address it.

The result was the creation of the Civic Coalition to Save Lives, a coalition of more than

100\* ORGANIZATIONS AND CEOS

who have come together to learn about, support, and drive proven, sustainable intervention strategies to materially reduce gun violence.

The aim is to bring together city, civic, and business leaders to support and amplify the important work of the many community and faith-based organizations that have been focused on and committed to this issue for decades. The coalition seeks to increase coordination between the city's government departments responsible for public safety and direct service providers and community-based organizations while providing additional oversight and support.

As this ever-growing and diverse Coalition of leaders locked arms, the Mayor and his administration, the District Attorney, and City Council President welcomed our offer of partnership.

While the rate of these crimes remains high, Philadelphia is, and will continue to make progress.

\*Originally, 70 organizations and CEOs joined the coalition. At publication in 2023, the Civic Coalition to Save Lives counts more than 100 organizations and CEOs as part of its membership.



# B

## CIVIC 50 (2021-2022)

The Civic 50 Greater Philadelphia recognizes civic-minded businesses that are using their time, talent, and resources to drive social impact in their communities. This regional initiative is an outgrowth of the national Civic 50, led by globally recognized nonprofit Points of Light.

With a 100-year history of strengthening the economic, social and civic vitality of our region, it's only fitting that Philadelphia Foundation was selected to announce The Civic 50 Greater Philadelphia honorees when the program was extended to our region in 2021. The Civic 50 Greater Philadelphia provides a standard for corporate citizenship and showcases how employers can make a difference in their communities.

In both 2021 and 2022, winners included organizations from a wide range of industries, including banking, healthcare, green energy, education, and much more. Winners scored highly based on their abilities to invest resources, integrate philanthropy across business functions, institutionalize policies and systems and measure their impact.

Greater Philadelphia-area businesses are making a massive difference in their communities, and we are proud to be a part of this annual program recognizing them for being positive agents of change.



## SUMMARY FINDINGS

The 2022 Civic 50 Greater Philadelphia honorees:

OVER  
\$255 MILLION

donated in monetary and in-kind contributions to Greater Philadelphia.

35%

of their employees were involved on average, in volunteering to support external organizations/efforts.

44%

on average, to support citizenship efforts internal to the company.

100%

integrated their community engagement into business functions, most often into workplace diversity and inclusion (88%),marketing/PR (74%) and employee engagement (68%).

64%

of Civic 50 Greater Philadelphia focused their community engagement on education.

48%

on children and youth development.

48%

on employment and workforce development.

76%

offered employees time off to volunteer.

92%

supported voting and civic involvement, usually among employees, but also customers.





C

## \$110 MILLION FOR RESIDENT-DRIVEN COMMUNITY DEVELOPMENT (2021)

We fully understand the power of partnership when it comes to joining forces with community-focused corporations that share our commitment to the vibrancy of the region's communities and the health and well-being of the residents who call it home.

As such, we welcomed the assets and mission of the former Wells Fargo Regional Foundation as a component fund of the Philadelphia Foundation with a transfer of \$110 million in charitable assets. Under the umbrella of Philadelphia Foundation, the new organization, known as the Regional Foundation, LLC, combines expertise in strategic philanthropy and community engagement to address critical community needs.

Regional Foundation has retained its focus on keeping, continuing, and growing resident-led, neighborhood development in communities in Eastern Pennsylvania, New Jersey, and Delaware, three regions where 800 grants totaling more than \$100 million have been awarded since 1998. We're thrilled to kick off this new partnership and continue making a difference across the tristate area.

D

## BLACK COMMUNITY LEADERS FUND (2021)

According to a report by the Philadelphia African American Leadership Forum funded in part by Philadelphia Foundation, Black-led nonprofits have smaller staffs, have fewer cash reserves and are more dependent on government grants than white-led organizations. These factors can make Black-led organizations more vulnerable to recessions and changes in government, and thus more financially precarious than white-led organizations.

To address this need, Philadelphia Foundation created the Black Community Leaders Fund to provide selected nonprofits with operational and capacity-building support to enable strong leadership, resilient operations and finances and greater infrastructure to weather unexpected adversity.

Launched with an initial \$1 million gift from Facebook, the fund has raised an additional \$3.15 million from the William Penn Foundation, the City of Philadelphia's Office of Community Empowerment and Opportunity, the Barra Foundation, the Samuel S. Fels Fund, Philadelphia Health Partnership and Wells Fargo.

More than 70 black-led organizations have received funding and participated in an ongoing series of leadership and capacity building workshops.



E

## SIGNING SANTAS PROJECT (2020-2021)

In 2020 and 2021, multiple fund holders came together to support the Signing Santa's Project of the Deaf-Hearing Communication Centre, Inc. (DHCC) in Swarthmore.

In 2020, it was the Dapplecroft Fund. In 2021, Blum for Good Fund, the Living Right Foundation Fund, The Graham Family Charitable Fund, The Koenig Family Charitable Fund, and the Darlin Family Fund gave support.

DHCC partnered with the Upper Gwynedd township fire department and brought Signing Santa there, where about 25 children visited. These children also received a tour of the equipment from Neil McDevitt, DHCC Executive Director and former volunteer fireman, who bore a suspicious resemblance to Santa.

The impact on the children cannot be overstated. It is a little known fact that most Deaf children are born to hearing parents. Therefore, the isolation imposed by COVID was much greater.

The team of four Signing Santas traveled 1,400 miles for this program over two weekends and a few special engagements in between. Santas were male and female, from a diverse set of cultural backgrounds. Each child was given a gift, but the greater gift was the time they got to spend in person with a Deaf Santa.





# ACTIVATE

A

## HURRICANE IDA DISASTER RELIEF (2021)

In September 2021, the remnants of Hurricane Ida brought tornadoes and historic flooding to parts of the region. Norristown and Bridgeport in Montgomery County were hit particularly hard as the Schuylkill River overflowed its banks, displacing hundreds of individuals and shuttering businesses.

In the immediate aftermath of the storm, ACLAMO, a Montgomery County-based nonprofit community service organization serving Latinos and other community members, quickly sprang into action to help their clients, many of whom experienced serious damage and loss of their homes and properties.

Philadelphia Foundation was able to draw on flexible resources to make an immediate \$25,000 grant to support the efforts and followed up with \$35,000 in additional flexible grants over the next two weeks to help the effort.

During initial recovery, clients were housed in a Red Cross Shelter set up at Norristown Area High School, where ACLAMO staff was on call 24/7 to facilitate conversations with Spanish-speaking residents.

ACLAMO's Ida Relief team coordinated emergency disaster relief services including delivery of essential items like food, clothing and hygiene products, placement of families in nine different hotels, and direct assistance in efforts to locate more permanent housing.

To get the message directly to residents, ACLAMO conducted numerous "Facebook Live" sessions in Spanish to share important information on how to navigate the various governmental systems, access shelters, and request food, among other pieces of critical information.

The ACLAMO Ida Relief Team staffed events at the Multi-Agency Resource Center (MARC) in Norristown to assist Spanish-speaking individuals in filing damage reports with the county and hosted an event with the Federal Emergency Management Agency (FEMA) to help clients fill out Disaster Assistance applications.

In all, ACLAMO provided various disaster relief services to more than 100 families in September 2021, reinforcing the critical role nonprofit organizations play in supporting our region's most vulnerable citizens and underscoring Philadelphia Foundation's unique opportunity to connect donors and resources to these organizations in real-time.



Art Works 2022 Individual Artist grantee, Cesar Viveros

B

## ART WORKS (2021)

The arts and culture community experienced extraordinary setbacks during the COVID-19 pandemic, but its importance in Philadelphia's civic identity remains rich.

That's why in 2021 we joined forces with the Forman Arts Initiative (FAI) to launch its inaugural initiative, Art Works. This joint \$3 million grant program is designed to support Philadelphia arts and cultural organizations and emerging artists working in partnership with Black, Indigenous, and people of color (BIPOC) and other underserved communities.

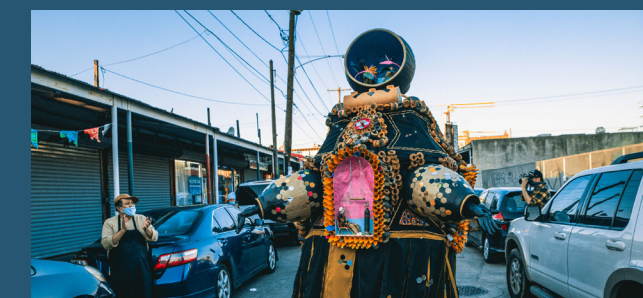
Art Works places a premium on work that is designed to connect, build, and transform spaces and narratives to break down barriers through open access and inclusion.

Open to both visual and performing artists, Art Works is designed to give grantees an opportunity to develop works that help others challenge their own perspectives by providing direct grants to regional, emerging artists, and community-based organizations whose work is equitable and community focused.

Organization awards range from \$75,000-\$150,000 over two years and can be used to support any aspect of an organization's mission, while individual artists receive \$50,000 each over two years.

With deep roots in its communities, Art Works grantees aspire to influence Greater Philadelphia's civic identity by using the arts as an engine to transform their communities and create safe space for active civic participation.

Grantees are selected by a nine-member committee composed of community advisors and FAI and Philadelphia Foundation principals and staff. In addition to the grants, Art Works grantees are provided access to host co-operative education students from Drexel University to enhance their organizational effectiveness. These placements, administered by Drexel's Lenfest Center for Cultural Partnerships, provide meaningful work experience in the arts and culture sector.



Art Works 2021 Individual Artist grantee, José A. Ortiz-Pagán



Art Works 2022, Organization grantee, The Colored Girls Museum



# ACCELERATE IMPACT

A

## KEY SKILLS HUB (2020-2022)

Through The Key Skills Hub, Philadelphia Foundation enables nonprofits to gain access to an online marketplace of highly skilled volunteers who are passionate and eager to use their professional skills to help advance an organization's mission.

Whether a nonprofit wants to choose from more than 120 pre-scoped projects or spend time brainstorming or thinking through strategy, the Key Skills Hub connects them with volunteers who have the skills the organization needs.

**"We're so little we don't have the staff to do that...and now we have almost 2,000 people on our Instagram account, which is really important for reaching younger people."**

Robin Morris, Executive Director;  
Garces Foundation



## KEY SKILLS HUB IMPACT AT-A-GLANCE

2021 Key Skills Hub Volunteer Engagement

10.7K

hours donated

\$2M

saved by nonprofits

589

projects matched

\$10K

average amount saved  
per nonprofit

B

## COLLABORATING WITH THE PHILADELPHIA EAGLES (2021)

Off the field, the Philadelphia Eagles are a service-focused organization dedicated to improving the lives of Eagles fans across the Greater Philadelphia region. In 2021, four members of the Eagles brand creative team utilized the Key Skills Hub to volunteer with nonprofit organizations.

These individuals donated more than 200 hours of design and technical assistance (roughly 10% of their annual workload) to 14 nonprofits in need. The free services, which had a financial impact of \$52,000 for the organizations, included design work, such as new logos, websites, and annual report layouts. We're proud to work with such an impactful organization and are thrilled to see the Key Skills Hub be put to such good use.

C

## GPCVC (2020-2022)

Serving as the host organization for The Greater Philadelphia Corporate Volunteer Council (GPCVC), Philadelphia Foundation helps strategically guide corporate volunteerism throughout the region by fostering greater collaboration between the business and nonprofit sectors.

By engaging the most important asset of any corporation — its employees — nonprofits can access additional skills and expertise to propel their missions. However, creating and driving a CSR strategy that aligns with business imperatives is part art, part science. Done well, a company's CSR approach will bolster talent acquisition and retention, contribute to revenue goals, and differentiate your brand. Figuring out the right formula can be daunting.

The GPCVC is the only regional membership organization whose sole purpose is to help companies maximize their CSR impact through community engagement. Through the GPCVC, we leverage the expertise of organizations that practice corporate social responsibility (CSR) to help educate, influence, and amplify our collective impact around corporate volunteerism.



**"We see employee volunteerism as a catalyst for monumental change in building stronger communities and helping nonprofits like us realize our mission. I would like to see all companies take pride in serving their communities by prioritizing volunteerism and community investment as a critical pillar of their overall corporate strategy."**

Marcus Allen, CEO,  
Big Brothers Big Sisters Independence





D

## BROOK J. LENFEST – IMMENSITAS SCHOLARS SUPPORT COLLEGE SUCCESS OF FOSTER YOUTH (2021)

Approximately 250 Philadelphia-area youth turn 18 and age out of the foster care system each year. Unfortunately, estimates show only 3% of former foster youth who enroll in college will graduate.

As long-time funders of both educational opportunities and vulnerable populations, we are proud to partner with the Brook J. Lenfest Foundation to create The Lenfest Immensitas Scholars program. This scholarship program aims to change this story through an innovative large-scale initiative designed to increase college graduation among up to 100 Philadelphians annually. Immensitas is Latin for “boundless” and signifies the unlimited potential of every youth, as well as the life opportunities available to those with a college degree.

Under Pennsylvania’s Fostering Independence Tuition Waiver Program, tuition and fees for undergraduate degrees at colleges and universities in Pennsylvania are waived for youth in foster care to reduce financial barriers. The \$1.8 million Lenfest Immensitas Scholars Program covers room, board and expenses such as books, computers, and essentials for dorm living, while simultaneously leveraging an extensive support system for participants. The supports are designed to provide students with everything they need to ensure they graduate, including academic advising, a summer bridge program, housing and meals during school breaks, financial and money management guidance and a designated liaison at each school.

”

*Education has the power to even the playing field for everyone, regardless of their start in life and where they come from. Yet many barriers to graduating college remain, and this scholarship aims to help students overcome the different obstacles that stand in their way.” Brook Lenfest*

E

## YOUTHADELPHIA (2021-22)

Philanthropy can start at any age, and today’s teens are acutely aware of the needs of their communities. YOUTHadelphia, a program supported through Philadelphia Foundation’s Fund for Children, gives teens the opportunity to examine pressing issues in their community and engage in grant making activities while developing leadership skills and nurturing civic engagement.

YOUTHadelphia awarded \$72,000 in 2020 to seven Philadelphia nonprofits addressing mental health, sexual health, education reform and youth leadership. These areas of impact were identified by the 13-member committee representing a diverse cross-section of Philadelphia teens, from both private and public schools. YOUTHadelphia awarded \$23,000 to the Youth Art & Self-Empowerment Project (YASP) in support of its youth-led work to end the practice of trying and incarcerating young people as adults.

Throughout its 16 years of grant making, the YOUTHadelphia program has awarded more than \$1.1 million to Greater Philadelphia-area nonprofits.



”

*We’re pleased to provide funding to nonprofit organizations that connect underserved communities with access to critical services like community safety, education, employment, affordable housing, family/social support, nutrition and activity programs.”*

*Maya Martinez-Davis,  
President, US Pharmaceuticals, GSK*

F

## GSK – MAKING A POWERFUL IMPACT ON HEALTH OUTCOMES (2020-2022)

The COVID-19 pandemic served as a stark reminder of the importance of public health. In response, GSK awarded ten local nonprofits with \$40,000 in recognition of their outstanding contributions to a healthier Greater Philadelphia region.

These nonprofits were selected by a panel led by the Philadelphia Foundation that consisted of GSK employees as well as local and national community health leaders. Winners were chosen based on their ability to demonstrate innovative, measured and sustainable approaches to addressing critical community health factors.

The 2020 winners included ACHIEVEability, Center in the Park, Domestic Violence Center of Chester County, Musicopia, Philadelphia Children’s Alliance, Philadelphia Futures, SEAMAAC (Southeast Asian MAA Coalition), SOWN (Supportive Older Women’s Network), Starfinder Foundation and Students Run Philly Style.

The 2021 winners included Beat the Streets, CB Community Schools, Career Wardrobe, Education Law Center, Healthy NewsWorks, Neighborhood Bike Works, Neighborhood Gardens Trust, Orion Communities, Uplift Center for Grieving Children and Women’s Community Revitalization Project.

The 2022 winners included Anti-Violence Partnership of Philadelphia, Beyond Literacy, Girls on the Run, Hand2Paw Foundation, Mitzvah Circle Foundation, Philadelphia City Rowing, Philadelphia VIP, Rock to the Future, SeniorLAW Center and Welcoming Center for New Pennsylvanians.





# OUR CAUSE AREAS



## OUR COMMUNITY

We see ourselves as stewards of local change for the Greater Philadelphia community. Whether it be partnering with local organizations, magnifying philanthropic impact, or preserving our region's history, our goal is to bring positive visions for the future of our community to life. The Pennsylvania Horticultural Society uses horticulture to advances positive change and the health and well-being of people in the Philadelphia region by building social connections, creating healthy living environments, increasing access to freshly grown food, and expanding economic opportunity.

## LGBTQ

Philadelphia has a rich history of supporting the LGBTQ community and equal rights. The Philadelphia Foundation has prioritized advancing this community in a number of ways, including our stewardship of the GLBT Fund of America and support of the Equality Forum, among others. Through support of The Independence Business Alliance, we support efforts to make the Philadelphia region an influential and diverse LGBTQ+ business community with an impact on economic development, equal rights, and policy issues.

## HUMAN SERVICES

Water, shelter, heat, and food. Many of us take these things for granted. But the reality is that many in the Greater Philadelphia region are living day-to-day without these essential services. Philadelphia Foundation is working with amazing organizations like MANNA, a nonprofit serving individuals of all kinds living with life-threatening illnesses, to ensure that everyone in our community has access to the basic essentials they need to thrive.



## CHILDREN

We believe today's youth represent tomorrow's community leaders. From funding and managing college scholarships to providing access to early education opportunities, educating our region's children remains one of our top priorities. By supporting organizations like City Year and Achieve Now, we're helping bring more resources and high-quality, culturally competent literacy instruction to the classroom. The Nessa Forman, David Forman, Eleanor and Solomon Forman Family Fund supports Greater Philadelphia nonprofits serving young people aged 11 to 18 offering in-school or out-of-school-time programs in Photography, Architecture, and the Written Arts. Grants and scholarships from the Ben Franklin City Trust help post-secondary students pursuing careers in the trades, crafts, or applied sciences.

## ARTS & CULTURE

Art can be the lens through which people view equity within the world. It can elevate and amplify diverse voices and help others challenge their own perspectives. Philadelphia Foundation works to empower art, culture, and music lovers to help cultivate the next generation of artists and audiences in the Philadelphia region through funds like the Edna W. Andrade Fund and the Virginia Brown Martin Fund and grants to organizations like Dance Iquail and the Black Pearl Chamber Orchestra.

## HEALTH & ENVIRONMENT

Philadelphia Foundation has long supported medical research, often being a "first-in funder" of researchers working on finding treatments for incurable diseases. One example is through the Brody Family Medical Trust Fund established by Sara Brody, which awards funds to full-time postdoctoral fellows in the early stages of their research into cutting-edge treatments for diseases that have a substantial societal impact and for which no consistently effective cure presently exists.



# BY THE NUMBERS

## 2020-2022 FINANCIALS

Thanks to a continued outpouring of community generosity, we ended 2022 with

\$725.9M

in consolidated assets, UP 14.7% from 2019

76%

of our total assets are endowed and will provide permanent charitable support to Greater Philadelphia nonprofits forever.

The overwhelming generosity of the region was on full display in 2020 as

8,552

individuals, families, companies and organizations contributed

\$84,441,268

1,022

Active Funds\*

806

endowed funds included.  
\* as of 12/31/22

\$549  
MILLION

in endowed assets.

We distributed more than

9,100

GRANTS AND  
SCHOLARSHIPS

totaling more than  
\$263.3 Million over the  
three year-period

## ORGANIZATIONAL HIGH WATER MARKS

2020

8,552

Donors

\$107.9  
MILLION

distributed in grants  
and scholarships

2021

\$802.6  
MILLION

in year-end consolidated assets

2022

\$85.6  
MILLION

contributed by individuals, families,  
companies and organizations

# THANK YOU TO THE GREATER PHILADELPHIA REGION!

On behalf of the entire Philadelphia Foundation team, we would like to thank our donors, nonprofit partners, board members, corporate sponsors, employees, volunteers, community members and everyone else involved with our organization for joining together to kick off our second century of impact. Without your support, the massive difference we've made over this transformative, challenging period would not be possible.

We would also like to extend a very special thanks to everyone involved in supporting the PHL COVID-19 Fund. This was a truly monumental effort that touched so many people during a time of immense need.

It's because of your generous financial and in-kind support that we were able to reach and engage with so many individuals throughout the region. Without everyone's innumerable contributions and efforts, none of this great work would have been possible. Thank you.

## THANK YOU TO OUR BOARD OF MANAGERS

Lon R. Greenberg, Chair

William J. Burke, Treasurer

Andrew R. Rogoff

Kate Allison

Christina Mesires Fournaris

Michael K. Pearson

Dixie James

R. Duane Perry

Evan Urbania

Shirin Karsan

Evelyn McNiff

Steven Scott Bradley

Fernando Chang-Muy

Wendell Pritchett

Holly Flanagan

William (Bill) P. Hankowsky

Jane Scaccetti

\*Lawrence J. Beaser,  
Chair Emeritus

\*Mindy Posoff  
(through 12/31/2021)

\*Anthony J. Conti  
(through 12/31/2020)

\*Stephen A Cozen  
(through February 2022)

\*Francis J Mirabello  
(through 12/31/2020)

\*Kerry Benson  
(through 12/31/2022)

\*John Nihill (through 12/31/2020)



## OUR SINCEREST APPRECIATION TO KATE ALLISON

Kate Allison's term as chair of the Philadelphia Foundation's Board of Managers spanned the majority of the time covered in this report (July 2020 -July 2023). An exceptional business and civic leader, and a passionate community advocate, Kate was instrumental in informing and launching a new century of service, which positioned Philadelphia Foundation to lead on critically important issues.

From our efforts to address the devastation in marginalized and vulnerable communities resulting from COVID-19 to our work to remove barriers and accelerate efforts towards racial and social equity and opportunity, Kate has been a trusted advisor, an active listener and a tireless community advocate.

We are grateful for Kate's leadership and commitment.



# PHILADELPHIA FOUNDATION



1835 Market Street, Suite 2410  
Philadelphia, PA 19103-2968

(215) 563-6417  
[donorrelations@philafound.org](mailto:donorrelations@philafound.org)  
**PHILAFFOUND.ORG**

